



# Test Report

Report No.: PTC19031300301C-EN01

Issue Date: Mar. 26, 2019

Page 1 of 13

**Applicant:** Shenzhen AiZhiMei Adult Products Co.,Ltd

**Address:** Room 1221 ,Global Logistics Services Centre, Longgang District, Shenzhen City, Guangdong Province, China

The following merchandise was (were) submitted and identified by client as:

**Sample Name:** sex doll

**Color:** nature or tan

**Manufacturer:** Shenzhen AiZhiMei Adult Products Co.,Ltd

**Address:** Room 1221 ,Global Logistics Services Centre, Longgang District, Shenzhen City, Guangdong Province, China

**Sample Received Date:** Mar. 19, 2019

**Completed Date:** Mar. 26, 2019

## Test Requested and Conclusion(s):

No.	Test Sample	Standard and Requirement	Conclusion(s)
1	Submitted sample	RoHS Directive 2011/65/EU and its subsequent amendments regulation EU No.2015/863. - Lead (Pb), Cadmium(Cd), Mercury(Hg), Hexavalent Chromium(Cr <sup>6+</sup> ), PBBs and PBDEs, Phthalates (DBP, BBP,DEHP,DIBP)	PASS

**Test Result(s):** Please refer to next page(s).



Signed for and on Behalf of PTC

Raul Cheng / P & C Department General Manager

DongGuan Precise Testing and Certification Corp. Ltd.

This report is issued according to the general clauses in [www.ptc-testing.com](http://www.ptc-testing.com) by PTC. Responsibility, guarantee and law restriction are defined in the general service clauses. The report is only responsible for the submitted sample(s) except as otherwise noted.  
The report could not be copied without permission

**DongGuan Precise Testing and Certification Corp. Ltd. (PTC)**

Building 1, No. 6, Tongxin Road, Dongcheng Street, Dongguan, Guangdong, China.  
Tel: 86-769-38808222 Fax: 86-769-38826111 [http:// www.ptc-testing.com](http://www.ptc-testing.com)



# Test Report

Report No.: PTC19031300301C-EN01

Issue Date: Mar. 26, 2019

Page 2 of 13

## Test Result(s):

RoHS - Lead (Pb)/Cadmium(Cd)/Mercury(Hg)/Hexavalent Chromium(Cr<sup>6+</sup>)

Method: IEC62321-3-1:2013, IEC62321-5:2013, IEC62321-4:2013, IEC 62321-7-1:2015, IEC 62321-7-2:2017, analyzed by AAS & ICP-AES & UV-Vis.

Test Item(s)	Pb	Cd	Hg	Cr <sup>6+</sup>	Conclusion
Limit (mg/kg)	1000	100	1000	1000	
Material No.	Result (mg/kg)				
1	N.D.	N.D.	N.D.	N.D.	PASS
2	N.D.	N.D.	N.D.	N.D.	PASS

- Note:**
1. mg/kg = milligram per kilogram (ppm).
  2. N.D. = Not Detected (<RL).
  3. RL (Reporting Limit) = 5 mg/kg.

RoHS - PBBs & PBDEs

Method: IEC 62321-6:2015, analyzed by Gas Chromatograph-Mass Spectrometry (GC-MS).

Test Item(s)	Limit (mg/kg)	Result (mg/kg)	
		1	2
PBBs	1000	N.D.	N.D.
Monobromobiphenyl	--	N.D.	N.D.
Dibromobiphenyl	--	N.D.	N.D.
Tribromobiphenyl	--	N.D.	N.D.
Tetrabromobiphenyl	--	N.D.	N.D.
Pentabromobiphenyl	--	N.D.	N.D.
Hexabromobiphenyl	--	N.D.	N.D.
Heptabromobiphenyl	--	N.D.	N.D.
Octabromobiphenyl	--	N.D.	N.D.
Nonabromobiphenyl	--	N.D.	N.D.
Decabromobiphenyl	--	N.D.	N.D.
PBDEs	1000	N.D.	N.D.
Monobromodiphenylether	--	N.D.	N.D.

This report is issued according to the general clauses in [www.ptc-testing.com](http://www.ptc-testing.com) by PTC. Responsibility, guarantee and law restriction are defined in the general service clauses. The report is only responsible for the submitted sample(s) except as otherwise noted.  
The report could not be copied without permission

**DongGuan Precise Testing and Certification Corp. Ltd. (PTC)**

Building 1, No. 6, Tongxin Road, Dongcheng Street, Dongguan, Guangdong, China.  
Tel: 86-769-38808222 Fax: 86-769-38826111 [http:// www.ptc-testing.com](http://www.ptc-testing.com)



# Test Report

Report No.: PTC19031300301C-EN01

Issue Date: Mar. 26, 2019

Page 3 of 13

Test Item(s)	Limit (mg/kg)	Result (mg/kg)	
		1	2
Dibromodiphenylether	--	N.D.	N.D.
Tribromodiphenylether	--	N.D.	N.D.
Tetrabromodiphenylether	--	N.D.	N.D.
Pentabromodiphenylether	--	N.D.	N.D.
Hexabromodiphenylether	--	N.D.	N.D.
Heptabromodiphenylether	--	N.D.	N.D.
Octabromodiphenylether	--	N.D.	N.D.
Nonabromodiphenylether	--	N.D.	N.D.
Decabromodiphenylether	--	N.D.	N.D.
Conclusion		PASS	PASS

- Note:**
1. mg/kg = milligram per kilogram (ppm).
  2. N.D. = Not Detected (< RL).
  3. RL (Reporting Limit) = 5mg/kg.

## Test Result(s):

ROHS - Phthalates DBP, DBP, BBP, DEHP

Method: IEC 62321-8: 2017, analyzed by Gas Chromatograph-Mass Spectrometry (GC-MS).

TABLE 2: GC/MS, ANALYZED BY GAS CHROMATOGRAPH-MASS SPECTROMETRY (GC/MS)					
Substances	DBP	BBP	DEHP	DIBP	Conclusion
CAS No.	84-74-2	85-68-7	117-81-7	84-69-5	
Limit (mg/kg)	1000	1000	1000	1000	
RL (mg/kg)	50	50	50	50	
Material No.	Result (mg/kg)				
1	N.D.	N.D.	N.D.	N.D.	PASS
2	N.D.	N.D.	N.D.	N.D.	PASS

- Note:**
1. mg/kg = milligram per kilogram (ppm).
  2. N.D. = Not Detected (<RL).
  3. RL=Reporting Limit.

This report is issued according to the general clauses in [www.ptc-testing.com](http://www.ptc-testing.com) by PTC. Responsibility, guarantee and law restriction are defined in the general service clauses. The report is only responsible for the submitted sample(s) except as otherwise noted.  
The report could not be copied without permission

**DongGuan Precise Testing and Certification Corp. Ltd. (PTC)**

Building 1, No. 6, Tongxin Road, Dongcheng Street, Dongguan, Guangdong, China.  
Tel: 86-769-38808222 Fax: 86-769-38826111 [http:// www.ptc-testing.com](http://www.ptc-testing.com)





# Test Report

Report No.: PTC19031300301C-EN01

Issue Date: Mar. 26, 2019

Page 4 of 13

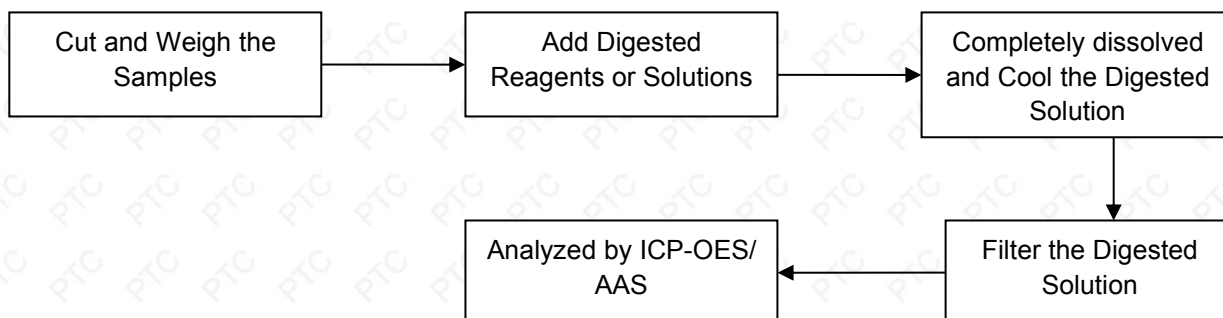
## Test Material List

The following materials apply only to the samples submitted for chemical testing.

Material No.	Description	Location
1	Nature silicone	Whole
2	tan silicone	Whole

## Test Process Flow:

### 1. Lead, Cadmium, Mercury



This report is issued according to the general clauses in [www.ptc-testing.com](http://www.ptc-testing.com) by PTC. Responsibility, guarantee and law restriction are defined in the general service clauses. The report is only responsible for the submitted sample(s) except as otherwise noted.  
The report could not be copied without permission

**DongGuan Precise Testing and Certification Corp. Ltd. (PTC)**

Building 1, No. 6, Tongxin Road, Dongcheng Street, Dongguan, Guangdong, China.  
Tel: 86-769-38808222 Fax: 86-769-38826111 [http:// www.ptc-testing.com](http://www.ptc-testing.com)



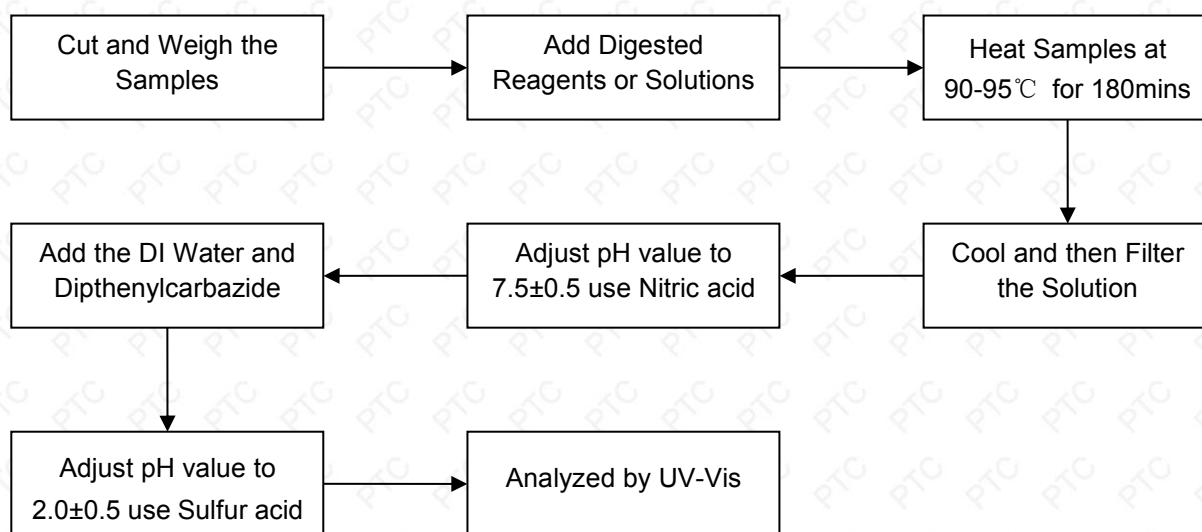
# Test Report

Report No.: PTC19031300301C-EN01

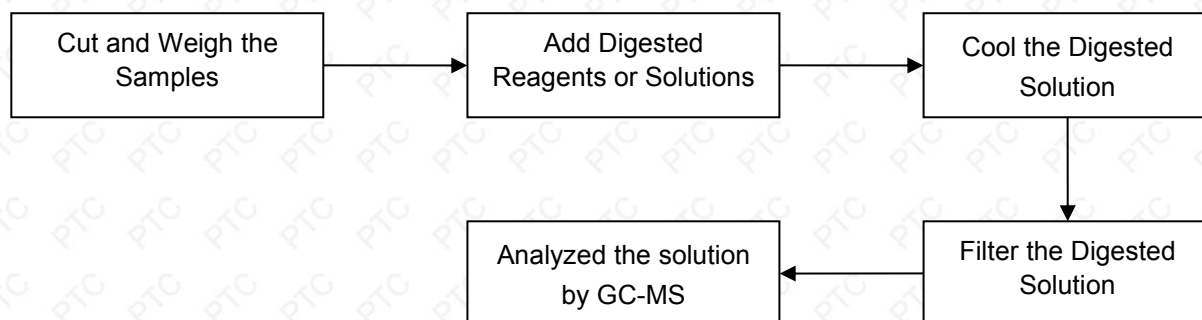
Issue Date: Mar. 26, 2019

Page 5 of 13

## 2. Hexavalent Chromium (Non-metal)



## 3. PBBs & PBDEs, Phthalates



This report is issued according to the general clauses in [www.ptc-testing.com](http://www.ptc-testing.com) by PTC. Responsibility, guarantee and law restriction are defined in the general service clauses. The report is only responsible for the submitted sample(s) except as otherwise noted. The report could not be copied without permission



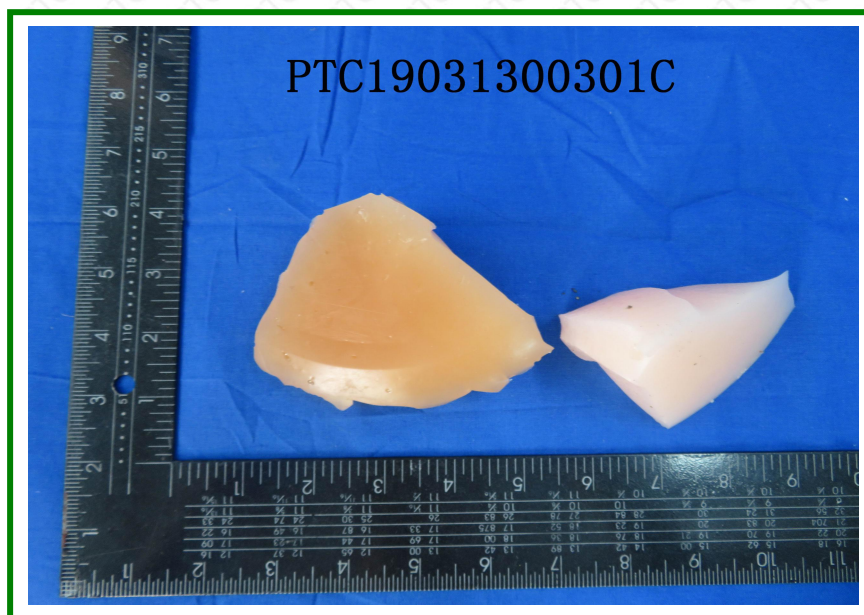
# Test Report

Report No.: PTC19031300301C-EN01

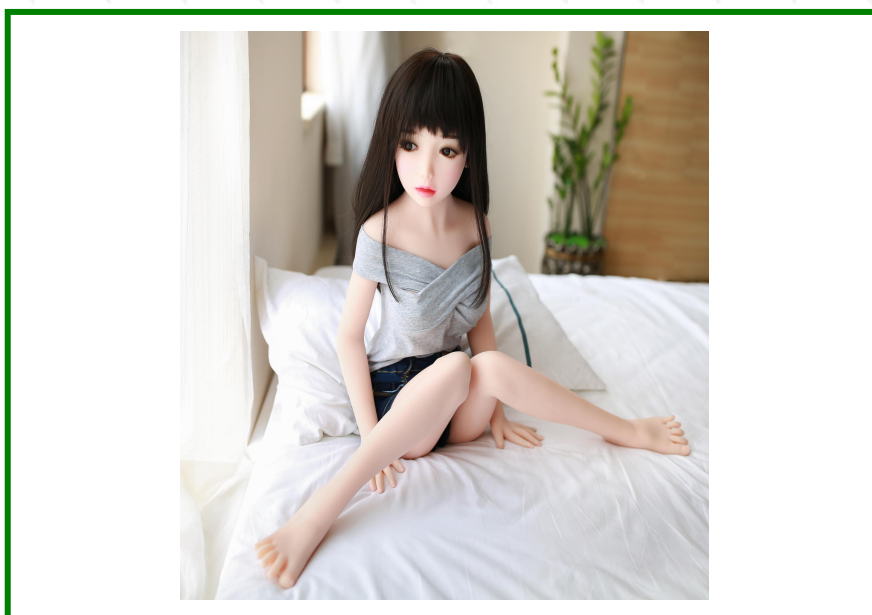
Issue Date: Mar. 26, 2019

Page 6 of 13

Photo(s) of Sample:



The following pictures are provided for customers



This report is issued according to the general clauses in [www.ptc-testing.com](http://www.ptc-testing.com) by PTC. Responsibility, guarantee and law restriction are defined in the general service clauses. The report is only responsible for the submitted sample(s) except as otherwise noted.  
The report could not be copied without permission

**DongGuan Precise Testing and Certification Corp. Ltd. (PTC)**  
Building 1, No. 6, Tongxin Road, Dongcheng Street, Dongguan, Guangdong, China.  
Tel: 86-769-38808222 Fax: 86-769-38826111 [http:// www.ptc-testing.com](http://www.ptc-testing.com)





# Test Report

Report No.: PTC19031300301C-EN01

Issue Date: Mar. 26, 2019

Page 7 of 13



This report is issued according to the general clauses in [www.ptc-testing.com](http://www.ptc-testing.com) by PTC. Responsibility, guarantee and law restriction are defined in the general service clauses. The report is only responsible for the submitted sample(s) except as otherwise noted.  
The report could not be copied without permission

**DongGuan Precise Testing and Certification Corp. Ltd. (PTC)**  
Building 1, No. 6, Tongxin Road, Dongcheng Street, Dongguan, Guangdong, China.  
Tel: 86-769-38808222 Fax: 86-769-38826111 [http:// www.ptc-testing.com](http://www.ptc-testing.com)



# Test Report

Report No.: PTC19031300301C-EN01

Issue Date: Mar. 26, 2019

Page 8 of 13



This report is issued according to the general clauses in [www.ptc-testing.com](http://www.ptc-testing.com) by PTC. Responsibility, guarantee and law restriction are defined in the general service clauses. The report is only responsible for the submitted sample(s) except as otherwise noted. The report could not be copied without permission

**DongGuan Precise Testing and Certification Corp. Ltd. (PTC)**

Building 1, No. 6, Tongxin Road, Dongcheng Street, Dongguan, Guangdong, China.  
Tel: 86-769-38808222 Fax: 86-769-38826111 [http:// www.ptc-testing.com](http://www.ptc-testing.com)





# Test Report

Report No.: PTC19031300301C-EN01

Issue Date: Mar. 26, 2019

Page 9 of 13



This report is issued according to the general clauses in [www.ptc-testing.com](http://www.ptc-testing.com) by PTC. Responsibility, guarantee and law restriction are defined in the general service clauses. The report is only responsible for the submitted sample(s) except as otherwise noted. The report could not be copied without permission

**DongGuan Precise Testing and Certification Corp. Ltd. (PTC)**  
Building 1, No. 6, Tongxin Road, Dongcheng Street, Dongguan, Guangdong, China.  
Tel: 86-769-38808222 Fax: 86-769-38826111 [http:// www.ptc-testing.com](http://www.ptc-testing.com)

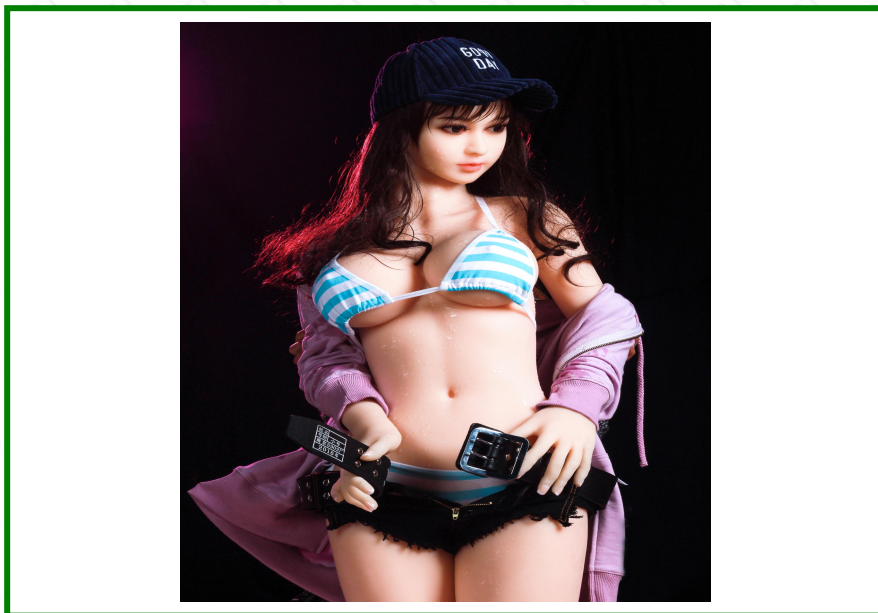


# Test Report

Report No.: PTC19031300301C-EN01

Issue Date: Mar. 26, 2019

Page 10 of 13



This report is issued according to the general clauses in [www.ptc-testing.com](http://www.ptc-testing.com) by PTC. Responsibility, guarantee and law restriction are defined in the general service clauses. The report is only responsible for the submitted sample(s) except as otherwise noted.  
The report could not be copied without permission

**DongGuan Precise Testing and Certification Corp. Ltd. (PTC)**  
Building 1, No. 6, Tongxin Road, Dongcheng Street, Dongguan, Guangdong, China.  
Tel: 86-769-38808222 Fax: 86-769-38826111 [http:// www.ptc-testing.com](http://www.ptc-testing.com)

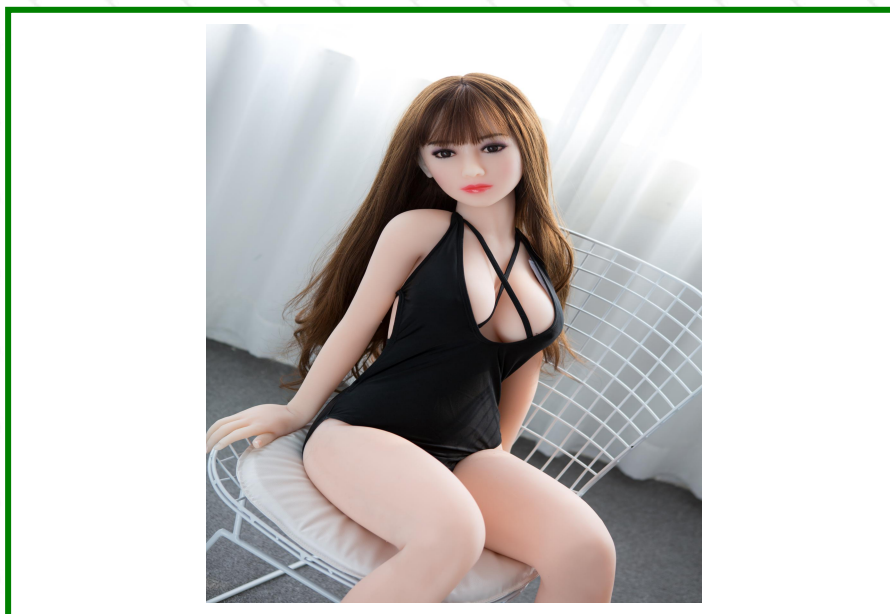


# Test Report

Report No.: PTC19031300301C-EN01

Issue Date: Mar. 26, 2019

Page 11 of 13



This report is issued according to the general clauses in [www.ptc-testing.com](http://www.ptc-testing.com) by PTC. Responsibility, guarantee and law restriction are defined in the general service clauses. The report is only responsible for the submitted sample(s) except as otherwise noted. The report could not be copied without permission

**DongGuan Precise Testing and Certification Corp. Ltd. (PTC)**  
Building 1, No. 6, Tongxin Road, Dongcheng Street, Dongguan, Guangdong, China.  
Tel: 86-769-38808222 Fax: 86-769-38826111 [http:// www.ptc-testing.com](http://www.ptc-testing.com)



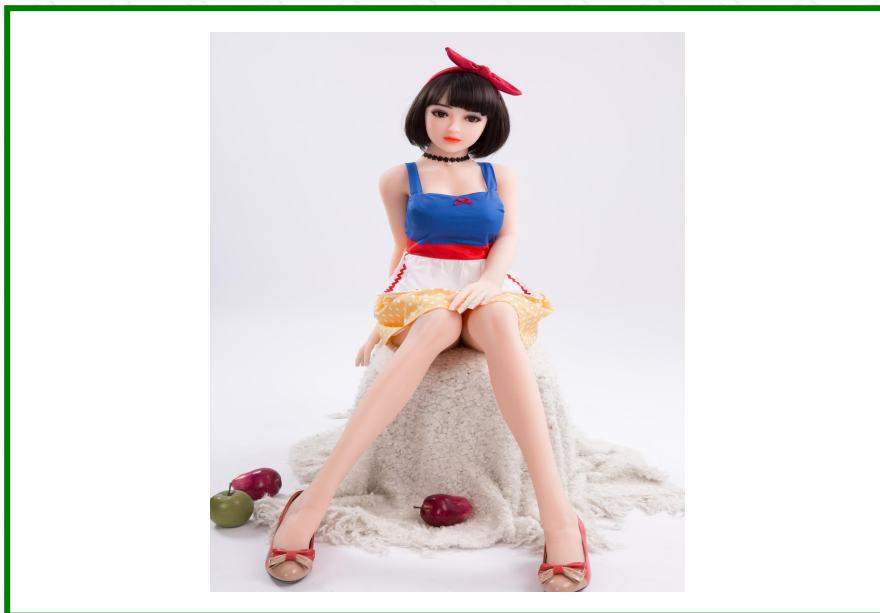


# Test Report

Report No.: PTC19031300301C-EN01

Issue Date: Mar. 26, 2019

Page 12 of 13



This report is issued according to the general clauses in [www.ptc-testing.com](http://www.ptc-testing.com) by PTC. Responsibility, guarantee and law restriction are defined in the general service clauses. The report is only responsible for the submitted sample(s) except as otherwise noted. The report could not be copied without permission

**DongGuan Precise Testing and Certification Corp. Ltd. (PTC)**  
Building 1, No. 6, Tongxin Road, Dongcheng Street, Dongguan, Guangdong, China.  
Tel: 86-769-38808222 Fax: 86-769-38826111 [http:// www.ptc-testing.com](http://www.ptc-testing.com)



# Test Report

Report No.: PTC19031300301C-EN01

Issue Date: Mar. 26, 2019

Page 13 of 13



\*\*\*End of Report\*\*\*

This report is issued according to the general clauses in [www.ptc-testing.com](http://www.ptc-testing.com) by PTC. Responsibility, guarantee and law restriction are defined in the general service clauses. The report is only responsible for the submitted sample(s) except as otherwise noted.  
The report could not be copied without permission

**DongGuan Precise Testing and Certification Corp. Ltd. (PTC)**  
Building 1, No. 6, Tongxin Road, Dongcheng Street, Dongguan, Guangdong, China.  
Tel: 86-769-38808222 Fax: 86-769-38826111 [http:// www.ptc-testing.com](http://www.ptc-testing.com)